



COMPANY OVERVIEW

CEMEX is a global building materials company that provides high-quality products and reliable service to customers and communities in more than 50 countries throughout the world, and maintains trade relationships in over 100 nations.

In the United Arab Emirates, we are a leading supplier of ready-mix concrete, slag (GGBS) and cement with more than 10 years of experience and relationship in supporting the expansion and growth of the UAE and the region.

Features & Benefits

Quality Control

- › Produce under a third party approved ISO 9001 quality management scheme
- › Technical Support from dedicated team

Knowledge

- › Support by our global research and development program to ensure the best performance.

Capacity

- › Proven ability to supply to any size of contract, from small scale deliveries to large landmark projects.

Experience

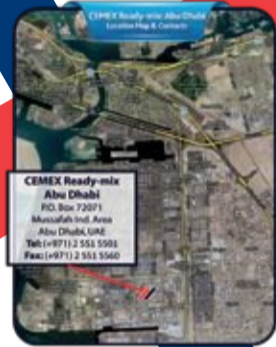
- › Multidisciplinary team with more than 20 years experience in the UAE and more than 50 years around the world.

TECHNICAL DATA

| | |
|--------------------------------------|------------------------|
| Concrete Grade (N/mm ²) | 5 to 80 |
| Durability (RCP, WP, WA) | 3000/ 20/2.0 |
| Slump (mm) | 75 to 250 |
| Slump Retention (min) | 90 to 180 |
| Maximum Aggregate (mm) | 10 or 20 |
| Typical Density (Kg/m ³) | 2400 |
| Cement Type | OPC, SRC, MSRPC |
| Supplementary Cements | GGBS, Microsilica, PFA |

KEY PROJECTS

**Watani Villas Khalifa City A
| Ferrari World | Hodariyat Bridge**



2 Concrete Plants
in Musaffah

TO SERVE YOU NOW



Building the future™

**800 CEMEX4U
800 2363948**

CEMEX SUPERMIX LLC
PO Box 72071
Musaffah Industrial Area
Abu Dhabi, UAE
Tel: +971 2 551 5501
Fax: +971 2 551 5560
Email : info.abudhabi@cemex.com

650 approximate number of employees in UAE

144 Truck mixers

30 Mobile pumps

5 Concrete plants running



Features & Benefits

Lower Environmental Impact

- › Reduction of Carbon footprint by up to 45%
- › Increase durability, reduce repair and maintenance works
- › Certificated performance to international environmental Standards.
- › Complies with Estidama for achieving 1 or 2 Pearl Points

High Performance

- › Optimize for the region extreme environmental conditions
- › Excellent workability and pumpability, available as Self Compacting Concrete.

Superior Chemical Protection

- › Greater resistance to Chloride and Sulfate penetration compared with OPC
- › Lower heat of hydration than OPC, thus reducing risk of thermal cracks

Enhanced Appearance

- › Lighter even color
- › Greater reflectivity for better visibility and safety

TECHNICAL DATA

| | |
|--------------------------------------|---|
| Concrete Grade (N/mm ²) | 10 to 80 |
| Durability (RCP, WP, WA) | 1000 to 3000/ 8 mm to 20 mm/ 1.5% to 2.0% |
| Slump (mm) | 75 to 250 |
| Slump Retention (min) | 90 to 180 |
| Maximum Aggregate (mm) | 10 or 20 |
| Typical Density (Kg/m ³) | 2400 |
| Cement Type | OPC, SRC, MSRPC |
| Supplementary Cementitious Material | GGBS, Microsilica |

Features & Benefits

Increase Productivity

- › Mixed with Automated system using the same formulation consistently thus assurance of quality.
- › Eliminates materials and labor cost dedicated for mixing at site. Delivered in 0.250 m3 tubs provided by CEMEX.
- › Usable for a full working day.

Arrange in a range of colors

- › Color plaster eliminates the need to paint.
- › Will not fade, peel or flake like paint.
- › Color is consistent throughout depth of plaster

Capacity

- › Proven ability to supply to any size of contract, from small scale deliveries to large landmark projects.

Experience

- › Multidisciplinary team with more than 20 years experience in the UAE and more than 50 years around the world.

TECHNICAL DATA

| | |
|--------------------------------------|-------------------|
| Concrete Grade (N/mm ²) | 5 to 20 |
| Durability (RCP, WP, WA) | Not Required |
| Slump (mm) | 75 to 150 |
| Slump Retention (min) | Up to 720 |
| Maximum Aggregate (mm) | 5 |
| Typical Density (Kg/m ³) | 2200 to 2300 |
| Cement Type | OPC, White Cement |
| Supplementary Cementitious Material | GGBS |

Features & Benefits

Easy to place

- › Eliminates need for vibrator/compaction thus reducing labor and execution time.
- › Gives a smooth surface that requires minimal further finishing.

High performance

- › Excellent strength characteristics
- › Full compaction is equivalent to better durability
- › High early strength is achievable.

Cost Effective

- › Reduce labour requirement
- › Reduce equipment requirement
- › Rapid placement
- › Elimination of after pour works (fixing finishing)

Experience

- › Multidisciplinary team with more than 20 years experience in the UAE and more than 50 years around the world.

TECHNICAL DATA

| | |
|--------------------------------------|---|
| Concrete Grade (N/mm ²) | 25 to 80 |
| Durability (RCP, WP, WA) | 1000 to 3000/ 8 mm to 20 mm/ 1.5% to 2.0% |
| Flow (mm) | 600 to 800 |
| Slump Retention (min) | 90 to 180 |
| Maximum Aggregate (mm) | 10 or 20 |
| Typical Density (Kg/m ³) | 2400 |
| Cement Type | OPC, SRC, MSRPC |
| Supplementary Cementitious Material | GGBS, Microsilica, PFA |