

Concrete Decorative Pavements

Cemex Signature Mixes



Customize your finish



1. Cemex Signature Mixes

(S01 - S20)	Stamped finish
(GP01 - GP06)	Polished concrete
(E01 - E05)	Exposed aggregate finish
(BR01 - BR02)	Broom finished concrete

2. Customize your finish

(BC01 – BC06)	Choose integral mix color
(BP01 – BP08)	Choose color intensity
(BA01 – BA06)	Choose aggregate
(BF01 – BF17)	Choose texture

3. Visit our Showroom

4. Contact us

Cemex Signature Mixes

Stamped finish (S01 - S20)

Size of the sample 300 mm * 300 mm

PLEASE NOTE: The print process does not allow for exact reproduction of the colors and therefore should not be taken as a definitive color match



S – 01

Cemex Signature Mixes

Stamped finish (S01 - S20)

Size of the sample 300 mm * 300 mm

PLEASE NOTE: The print process does not allow for exact reproduction of the colors and therefore should not be taken as a definitive color match



S – 02

Cemex Signature Mixes

Stamped finish (S01 - S20)

Size of the sample 300 mm * 300 mm

PLEASE NOTE: The print process does not allow for exact reproduction of the colors and therefore should not be taken as a definitive color match



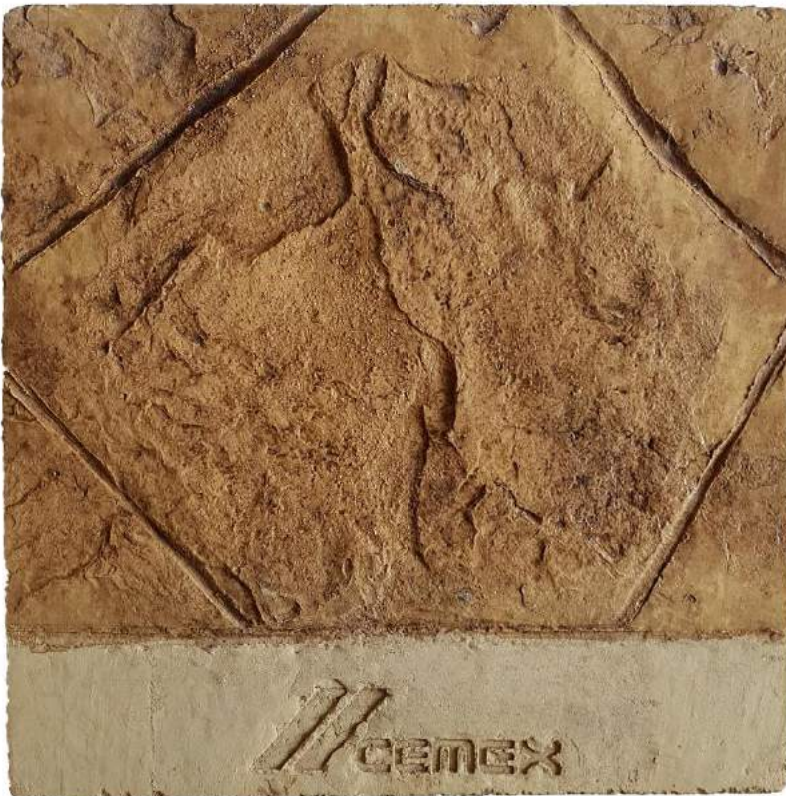
S – 03

Cemex Signature Mixes

Stamped finish (S01 - S20)

Size of the sample 300 mm * 300 mm

PLEASE NOTE: The print process does not allow for exact reproduction of the colors and therefore should not be taken as a definitive color match



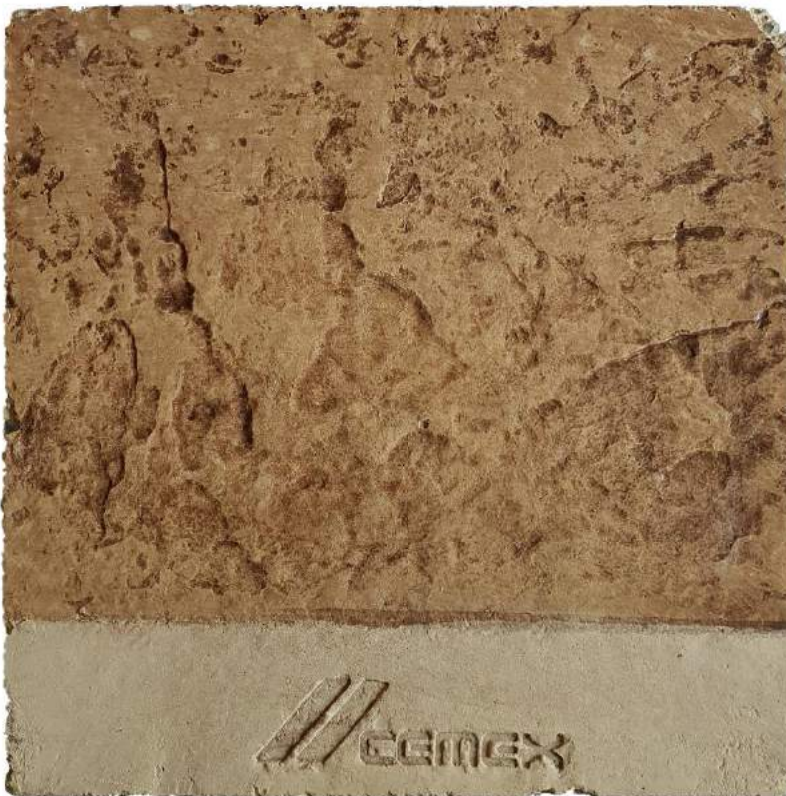
S – 04

Cemex Signature Mixes

Stamped finish (S01 - S20)

Size of the sample 300 mm * 300 mm

PLEASE NOTE: The print process does not allow for exact reproduction of the colors and therefore should not be taken as a definitive color match



S – 05

Cemex Signature Mixes

Stamped finish (S01 - S20)

Size of the sample 300 mm * 300 mm

PLEASE NOTE: The print process does not allow for exact reproduction of the colors and therefore should not be taken as a definitive color match



S – 06

Cemex Signature Mixes

Stamped finish (S01 - S20)

Size of the sample 300 mm * 300 mm

PLEASE NOTE: The print process does not allow for exact reproduction of the colors and therefore should not be taken as a definitive color match



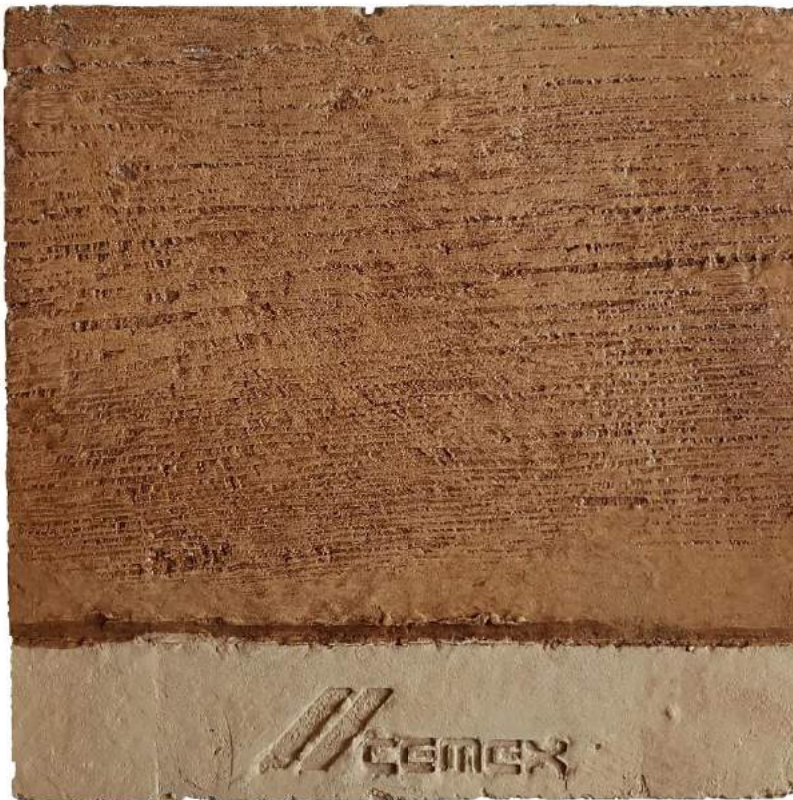
S – 07

Cemex Signature Mixes

Stamped finish (S01 - S20)

Size of the sample 300 mm * 300 mm

PLEASE NOTE: The print process does not allow for exact reproduction of the colors and therefore should not be taken as a definitive color match



S – 08

Cemex Signature Mixes

Stamped finish (S01 - S20)

Size of the sample 300 mm * 300 mm

PLEASE NOTE: The print process does not allow for exact reproduction of the colors and therefore should not be taken as a definitive color match



S – 09

Cemex Signature Mixes

Stamped finish (S01 - S20)

Size of the sample 300 mm * 300 mm

PLEASE NOTE: The print process does not allow for exact reproduction of the colors and therefore should not be taken as a definitive color match



S – 10

Cemex Signature Mixes

Stamped finish (S01 - S20)

Size of the sample 300 mm * 300 mm

PLEASE NOTE: The print process does not allow for exact reproduction of the colors and therefore should not be taken as a definitive color match



S – 11

Cemex Signature Mixes

Stamped finish (S01 - S20)

Size of the sample 300 mm * 300 mm

PLEASE NOTE: The print process does not allow for exact reproduction of the colors and therefore should not be taken as a definitive color match



S – 12

Cemex Signature Mixes

Stamped finish (S01 - S20)

Size of the sample 300 mm * 300 mm

PLEASE NOTE: The print process does not allow for exact reproduction of the colors and therefore should not be taken as a definitive color match



S – 13

Cemex Signature Mixes

Stamped finish (S01 - S20)

Size of the sample 300 mm * 300 mm

PLEASE NOTE: The print process does not allow for exact reproduction of the colors and therefore should not be taken as a definitive color match



S – 14

Cemex Signature Mixes

Stamped finish (S01 - S20)

Size of the sample 300 mm * 300 mm

PLEASE NOTE: The print process does not allow for exact reproduction of the colors and therefore should not be taken as a definitive color match



S – 15

Cemex Signature Mixes

Stamped finish (S01 - S20)

Size of the sample 300 mm * 300 mm

PLEASE NOTE: The print process does not allow for exact reproduction of the colors and therefore should not be taken as a definitive color match



S – 16

Cemex Signature Mixes

Stamped finish (S01 - S20)

Size of the sample 300 mm * 300 mm

PLEASE NOTE: The print process does not allow for exact reproduction of the colors and therefore should not be taken as a definitive color match



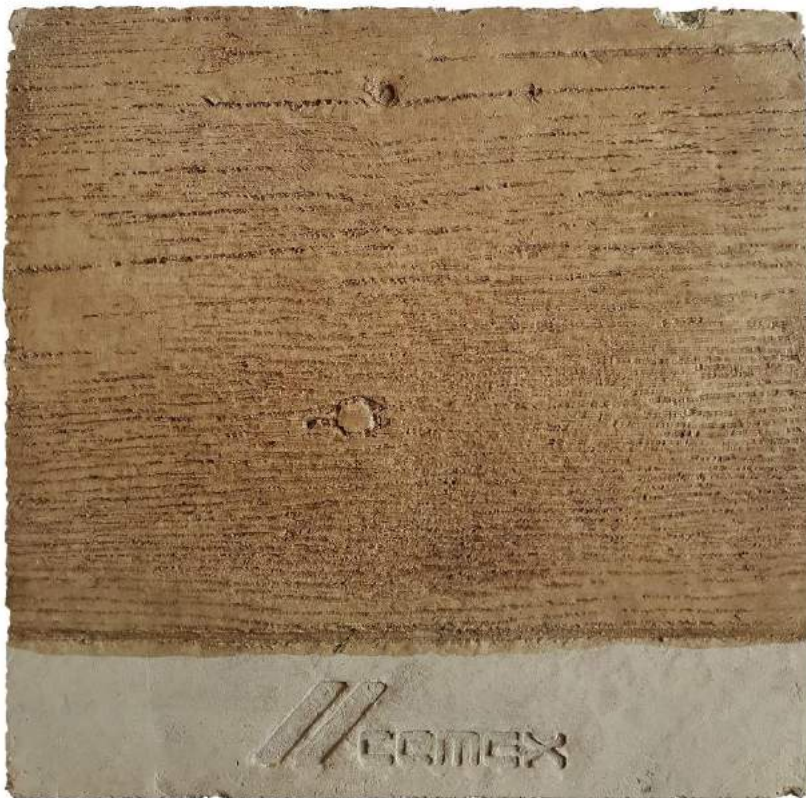
S – 17

Cemex Signature Mixes

Stamped finish (S01 - S20)

Size of the sample 300 mm * 300 mm

PLEASE NOTE: The print process does not allow for exact reproduction of the colors and therefore should not be taken as a definitive color match



S – 18

Cemex Signature Mixes

Stamped finish (S01 - S20)

Size of the sample 300 mm * 300 mm

PLEASE NOTE: The print process does not allow for exact reproduction of the colors and therefore should not be taken as a definitive color match



S – 19

Cemex Signature Mixes

Stamped finish (S01 - S20)

Size of the sample 300 mm * 300 mm

PLEASE NOTE: The print process does not allow for exact reproduction of the colors and therefore should not be taken as a definitive color match



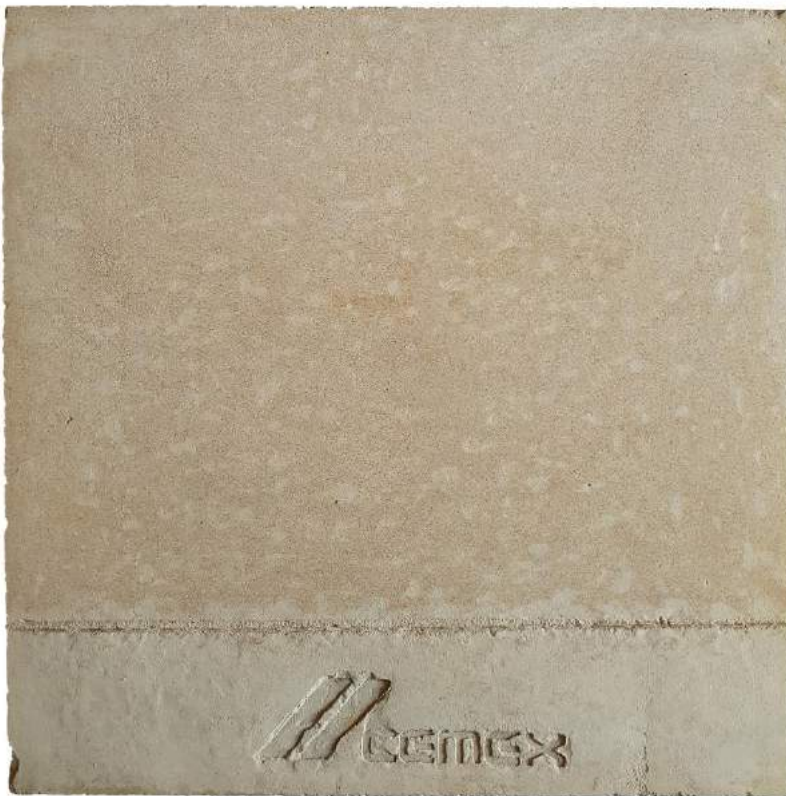
S – 20

Cemex Signature Mixes

Polished finish (GP01 - GP06)

Size of the sample 300 mm * 300 mm

PLEASE NOTE: The print process does not allow for exact reproduction of the colors and therefore should not be taken as a definitive color match



GP – 01

Cemex Signature Mixes

Polished finish (GP01 - GP06)

Size of the sample 300 mm * 300 mm

PLEASE NOTE: The print process does not allow for exact reproduction of the colors and therefore should not be taken as a definitive color match



GP – 02

Cemex Signature Mixes

Polished finish (GP01 - GP06)

Size of the sample 300 mm * 300 mm

PLEASE NOTE: The print process does not allow for exact reproduction of the colors and therefore should not be taken as a definitive color match



GP – 03

Cemex Signature Mixes

Polished finish (GP01 - GP06)

Size of the sample 300 mm * 300 mm

PLEASE NOTE: The print process does not allow for exact reproduction of the colors and therefore should not be taken as a definitive color match



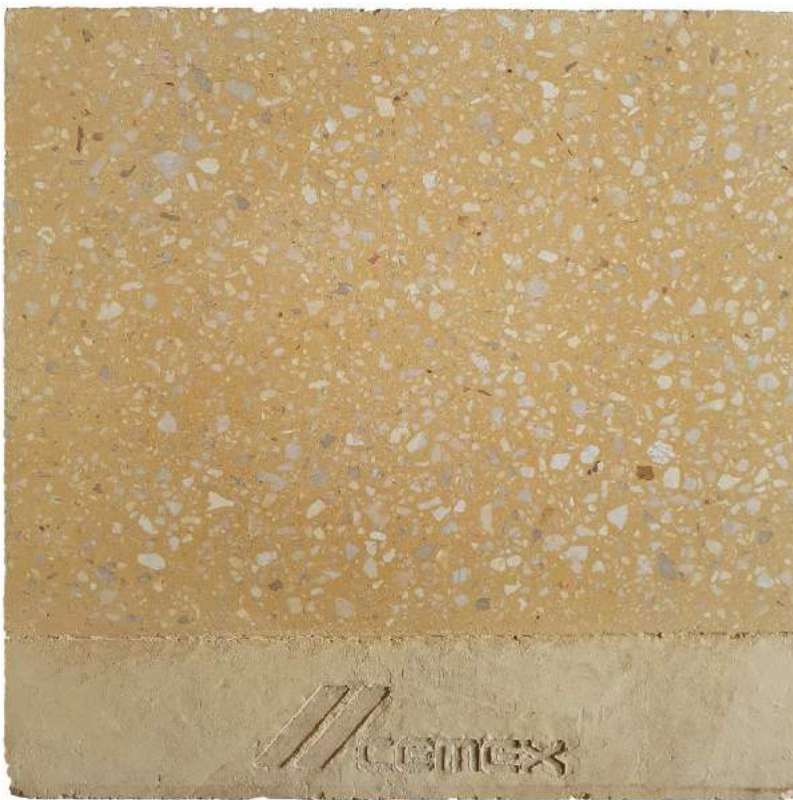
GP – 04

Cemex Signature Mixes

Polished finish (GP01 - GP06)

Size of the sample 300 mm * 300 mm

PLEASE NOTE: The print process does not allow for exact reproduction of the colors and therefore should not be taken as a definitive color match



GP – 05

Cemex Signature Mixes

Polished finish (GP01 - GP06)

Size of the sample 300 mm * 300 mm

PLEASE NOTE: The print process does not allow for exact reproduction of the colors and therefore should not be taken as a definitive color match



GP – 06

Cemex Signature Mixes

Exposed Aggregate Finish (E01 - E05)

Size of the sample 300 mm * 300 mm

PLEASE NOTE: The print process does not allow for exact reproduction of the colors and therefore should not be taken as a definitive color match



E – 01

Cemex Signature Mixes

Exposed Aggregate Finish (E01 - E05)

Size of the sample 300 mm * 300 mm

PLEASE NOTE: The print process does not allow for exact reproduction of the colors and therefore should not be taken as a definitive color match



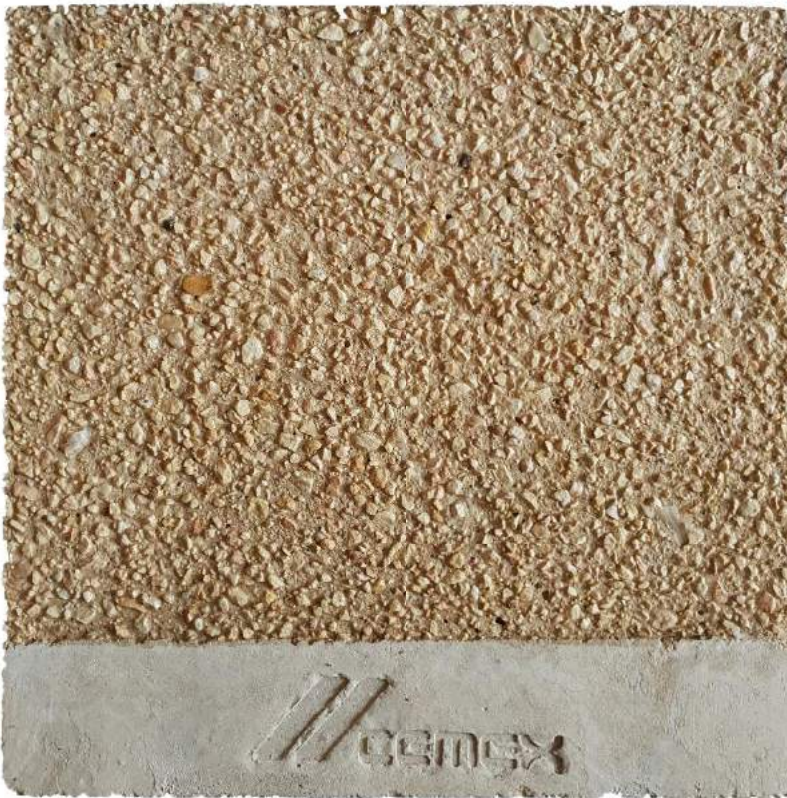
E – 02

Cemex Signature Mixes

Exposed Aggregate Finish (E01 - E05)

Size of the sample 300 mm * 300 mm

PLEASE NOTE: The print process does not allow for exact reproduction of the colors and therefore should not be taken as a definitive color match



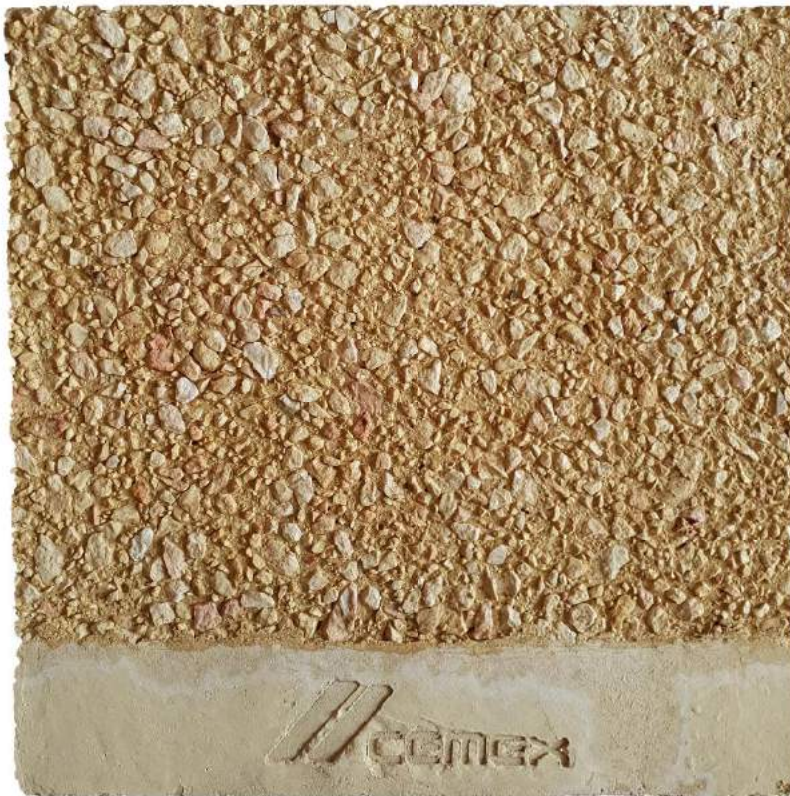
E – 03

Cemex Signature Mixes

Exposed Aggregate Finish (E01 - E05)

Size of the sample 300 mm * 300 mm

PLEASE NOTE: The print process does not allow for exact reproduction of the colors and therefore should not be taken as a definitive color match



E – 04

Cemex Signature Mixes

Exposed Aggregate Finish (E01 - E05)

Size of the sample 300 mm * 300 mm

PLEASE NOTE: The print process does not allow for exact reproduction of the colors and therefore should not be taken as a definitive color match



E – 05

Cemex Signature Mixes

Broom Finished (BR01 - BR02)

Size of the sample 300 mm * 300 mm

PLEASE NOTE: The print process does not allow for exact reproduction of the colors and therefore should not be taken as a definitive color match



BR – 01

Cemex Signature Mixes

Broom Finished (BR01 - BR02)

Size of the sample 300 mm * 300 mm

PLEASE NOTE: The print process does not allow for exact reproduction of the colors and therefore should not be taken as a definitive color match



BR – 02

Customize your decorative pavement

Choose integral mix color (BC01 - BC06)

Choose from a wide variety of colors to form a unique look of your decorative concrete pavement

PLEASE NOTE: The print process does not allow for exact reproduction of the colors and therefore should not be taken as a definitive color match



Light Peach



Copper Dust



Pale Tea



Peachy peach



Bronze Tan



Mystic Mustard



Cactus Dark



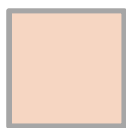
Walnut Wood



Rusty Corten



Castle Red



Floral Pink



Rustic Brick



Carmine Red



Misano Red



Green Earth



Sapphire Blue



Oyster Pearl



Rhodium Grey



Charcoal Dust



Nebula Black

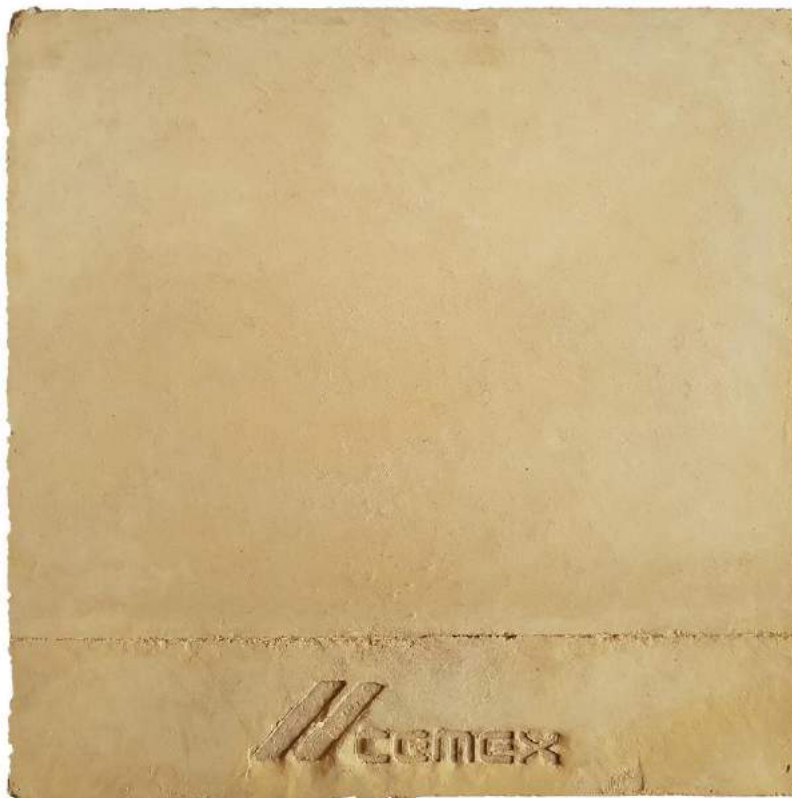
Customize your decorative pavement

Choose integral mix color (BC01 - BC06)

Choose from a wide variety of colors to form a unique look of your decorative concrete pavement

Size of the sample 300 mm * 300 mm

PLEASE NOTE: The print process does not allow for exact reproduction of the colors and therefore should not be taken as a definitive color match



BC – 01
Peachy Peach

Customize your decorative pavement

Choose integral mix color (BC01 - BC06)

Size of the sample 300 mm * 300 mm

PLEASE NOTE: The print process does not allow for exact reproduction of the colors and therefore should not be taken as a definitive color match



BC – 02
Bronze Tan

Customize your decorative pavement

Choose integral mix color (BC01 - BC06)

Size of the sample 300 mm * 300 mm

PLEASE NOTE: The print process does not allow for exact reproduction of the colors and therefore should not be taken as a definitive color match



BC – 03
Oyster Pearl

Customize your decorative pavement

Choose integral mix color (BC01 - BC06)

Size of the sample 300 mm * 300 mm

PLEASE NOTE: The print process does not allow for exact reproduction of the colors and therefore should not be taken as a definitive color match



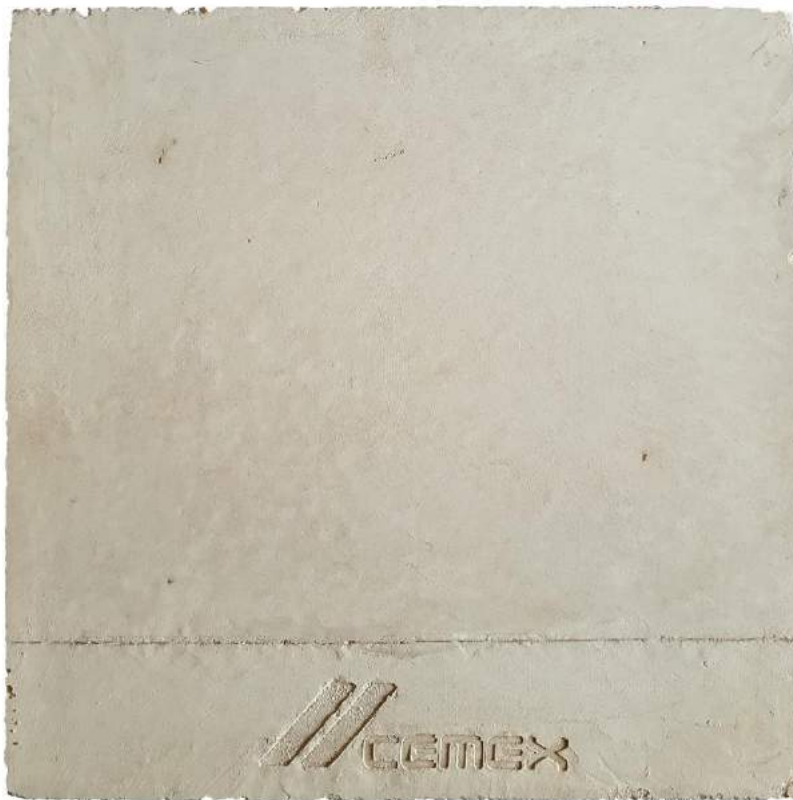
BC – 04
Misano Red

Customize your decorative pavement

Choose integral mix color (BC01 - BC06)

Size of the sample 300 mm * 300 mm

PLEASE NOTE: The print process does not allow for exact reproduction of the colors and therefore should not be taken as a definitive color match



BC – 05
Light Peach

Customize your decorative pavement

Choose integral mix color (BC01 - BC06)

Size of the sample 300 mm * 300 mm

PLEASE NOTE: The print process does not allow for exact reproduction of the colors and therefore should not be taken as a definitive color match



BC – 06
Pale Tea

Customize your decorative pavement

Choose color intensity (BP01 - BP08)

Choose the pigment content to enhance the color mix

The quantity of pigment on the mix will impact on the Intensity of the color but also on price of the mix.

PLEASE NOTE: The print process does not allow for exact reproduction of the colors and therefore should not be taken as a definitive color match



Low



Medium



High



Very High



Impact of the pigment content for the color **%Carmine Red+**



Low



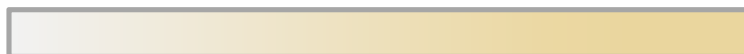
Medium



High



Very High



Impact of the pigment content for the color **%Pale Tea+**

Customize your decorative pavement

Choose color intensity (BP01 - BP08)

Size of the sample 300 mm * 300 mm

PLEASE NOTE: The print process does not allow for exact reproduction of the colors and therefore should not be taken as a definitive color match



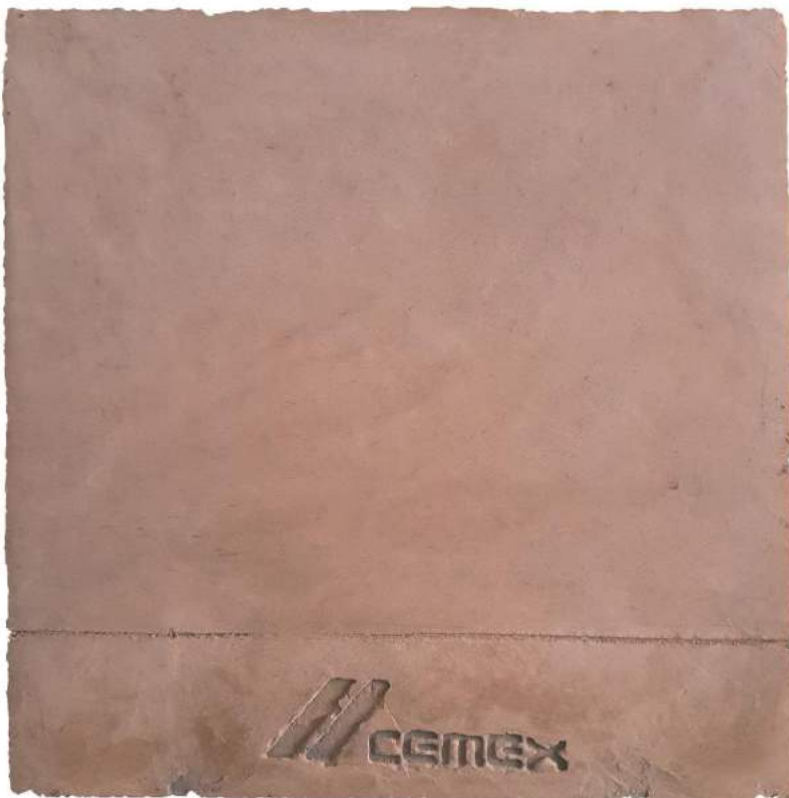
BP – 01
Low (Carmine Red)

Customize your decorative pavement

Choose color intensity (BP01 - BP08)

Size of the sample 300 mm * 300 mm

PLEASE NOTE: The print process does not allow for exact reproduction of the colors and therefore should not be taken as a definitive color match



BP – 02
Medium (Carmine Red)

Customize your decorative pavement

Choose color intensity (BP01 - BP08)

Size of the sample 300 mm * 300 mm

PLEASE NOTE: The print process does not allow for exact reproduction of the colors and therefore should not be taken as a definitive color match



BP – 03
High (Carmine Red)

Customize your decorative pavement

Choose color intensity (BP01 - BP08)

Size of the sample 300 mm * 300 mm

PLEASE NOTE: The print process does not allow for exact reproduction of the colors and therefore should not be taken as a definitive color match



BP – 04
Very High (Carmine Red)

Customize your decorative pavement

Choose color intensity (BP01 - BP08)

Size of the sample 300 mm * 300 mm

PLEASE NOTE: The print process does not allow for exact reproduction of the colors and therefore should not be taken as a definitive color match



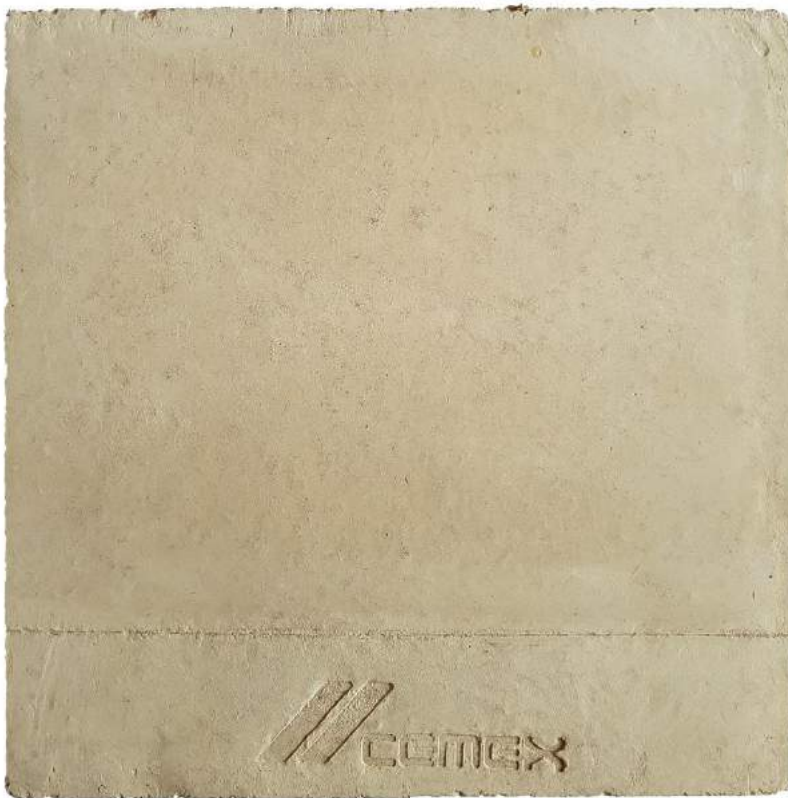
BP – 05
Low (Pale Tea)

Customize your decorative pavement

Choose color intensity (BP01 - BP08)

Size of the sample 300 mm * 300 mm

PLEASE NOTE: The print process does not allow for exact reproduction of the colors and therefore should not be taken as a definitive color match



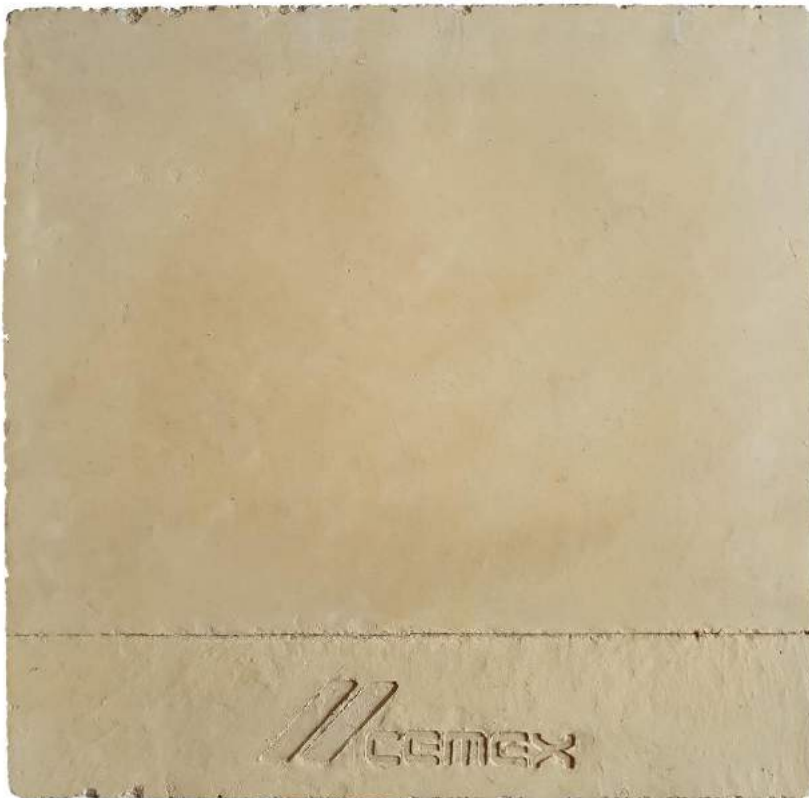
BP – 06
Medium (Pale Tea)

Customize your decorative pavement

Choose color intensity (BP01 - BP08)

Size of the sample 300 mm * 300 mm

PLEASE NOTE: The print process does not allow for exact reproduction of the colors and therefore should not be taken as a definitive color match



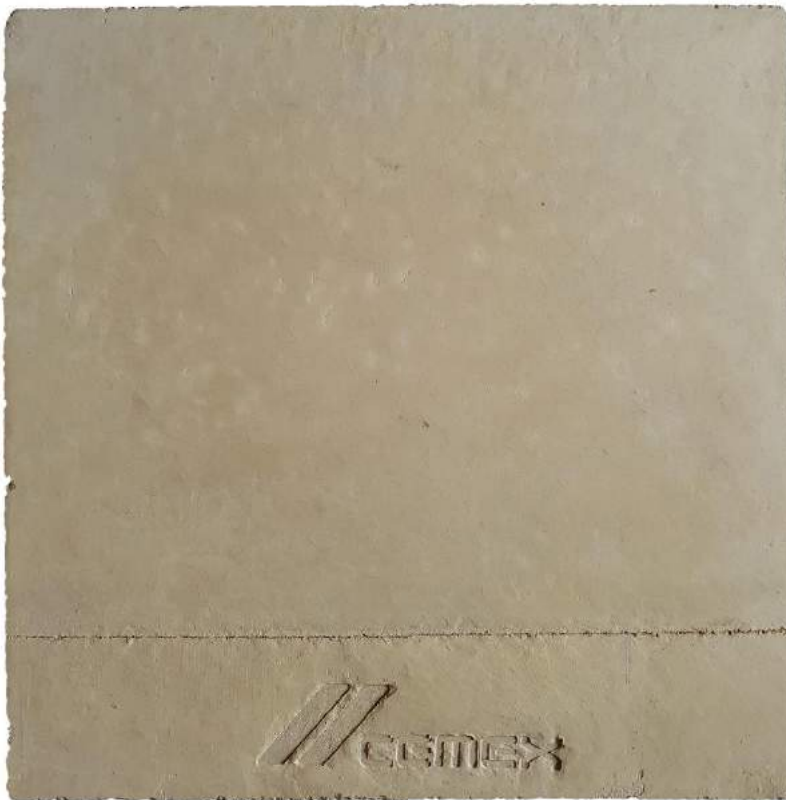
BP – 07
High (Pale Tea)

Customize your decorative pavement

Choose color intensity (BP01 - BP08)

Size of the sample 300 mm * 300 mm

PLEASE NOTE: The print process does not allow for exact reproduction of the colors and therefore should not be taken as a definitive color match



BP – 08
Very high (Pale Tea)

Customize your decorative pavement

Choose aggregate (BA01 - BA06)

Combine from a wide variety of aggregates to form a unique finish
This choice will impact on the exposed/polished finish

PLEASE NOTE: The print process does not allow for exact reproduction of the colors and therefore should not be taken as a definitive color match



~ White



~ Light grey



~ Grey



~ Dark grey



~ Yellow



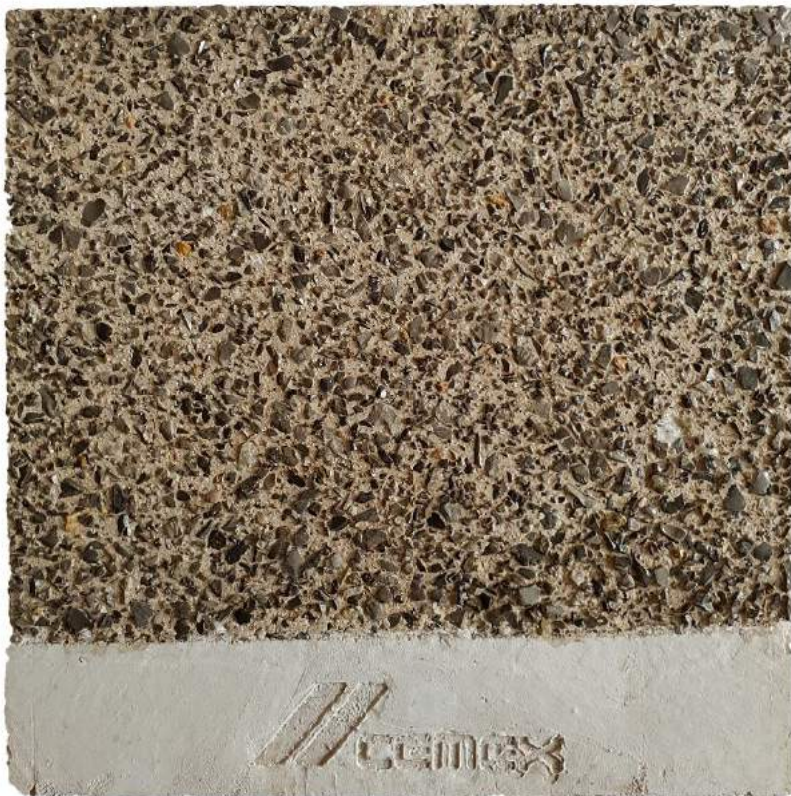
~ Luminescent

Customize your decorative pavement

Choose aggregate (BA01 - BA06)

Size of the sample 300 mm * 300 mm

PLEASE NOTE: The print process does not allow for exact reproduction of the colors and therefore should not be taken as a definitive color match



BA – 01
Grey

Customize your decorative pavement

Choose aggregate (BA01 - BA06)

Size of the sample 300 mm * 300 mm

PLEASE NOTE: The print process does not allow for exact reproduction of the colors and therefore should not be taken as a definitive color match



BA – 02
Grey

Customize your decorative pavement

Choose aggregate (BA01 - BA06)

Size of the sample 300 mm * 300 mm

PLEASE NOTE: The print process does not allow for exact reproduction of the colors and therefore should not be taken as a definitive color match



BA – 03
Dark grey

Customize your decorative pavement

Choose aggregate (BA01 - BA06)

Size of the sample 300 mm * 300 mm

PLEASE NOTE: The print process does not allow for exact reproduction of the colors and therefore should not be taken as a definitive color match



BA – 04
Yellow

Customize your decorative pavement

Choose aggregate (BA01 - BA06)

Size of the sample 300 mm * 300 mm

PLEASE NOTE: The print process does not allow for exact reproduction of the colors and therefore should not be taken as a definitive color match



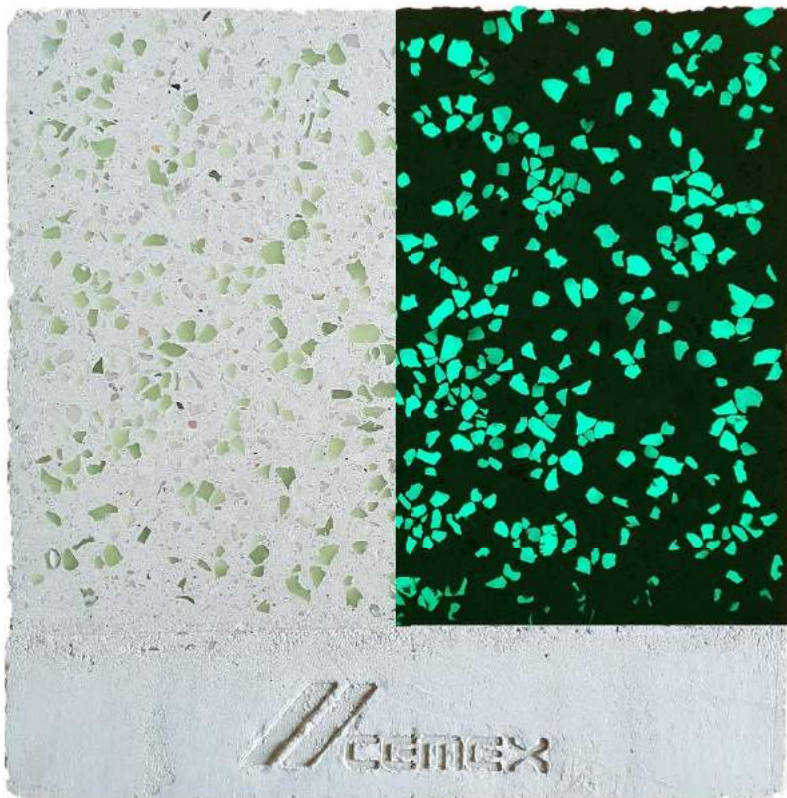
BA – 05
White

Customize your decorative pavement

Choose aggregate (BA01 - BA06)

Size of the sample 300 mm * 300 mm

PLEASE NOTE: The print process does not allow for exact reproduction of the colors and therefore should not be taken as a definitive color match



BA – 06
Luminescent

Customize your decorative pavement

Choose texture. Stamped



Choose from a wide variety of patterns to form a unique finish



~ Ashlar slate



~ Chiseled slate



~ Fieldstone



~ Wood planks



~ Heavy stone



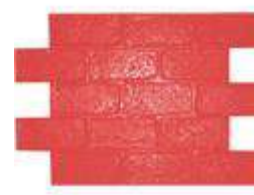
~ Italian slate



~ Large stone fan



~ Majestic Ashlar



~ Old Chicago brick

Customize your decorative pavement

Choose texture. Polished



Choose the level of aggregate exposure and finished gloss to form a unique polished finish. The concrete polishing association of America defines the following levels of aggregate exposure and finished gloss:

~ Aggregate exposure

CLASS	NAME	APPROXIMATE SURFACE CUT DEPTH*	APPEARANCE
A	Cream	Very little	Little aggregate exposure
B	Fine Aggregate (Salt and Pepper)	1/16 inch	Fine aggregate exposure with little or no medium aggregate exposure at random locations
C	Medium Aggregate	1/8 inch	Medium aggregate exposure with little or no large aggregate exposure at random locations
D	Large Aggregate	1/4 inch	Large aggregate exposure with little or no fine aggregate exposure at random locations

~ Finished gloss

LEVEL	NAME	REFLECTIVE CLARITY	REFLECTIVE SHEEN	SUGGESTED GRIT RANGE	SUGGESTED MINIMUM NUMBER OF ABRASIVE PASSES
1	Flat [Ground]	Flat appearance with no to very slight diffused reflection	None to very low	Below 100	4
2	Satin [Honed]	Matte appearance with or without slight diffused reflection	Low to medium	100 to 400	5
3	Semi-Polished	Objects being reflected are not quite sharp and crisp but can be easily identified	Medium to high	800 and higher	6
4	Highly-Polished	Objects being reflected are sharp and crisp as would be seen in a mirror-like reflection	High to highest		7



Customize your decorative pavement

Choose texture. Exposed aggregate



Playing with the color of the aggregate and the integral color of the concrete, a unique exposed aggregate finish can be formed.

The perfect balance between functionality and aesthetics, providing High Slip resistance

Customize your decorative pavement

Choose texture. Broom finished



Playing with the integral color of the mix, a unique broom finished can be formed.

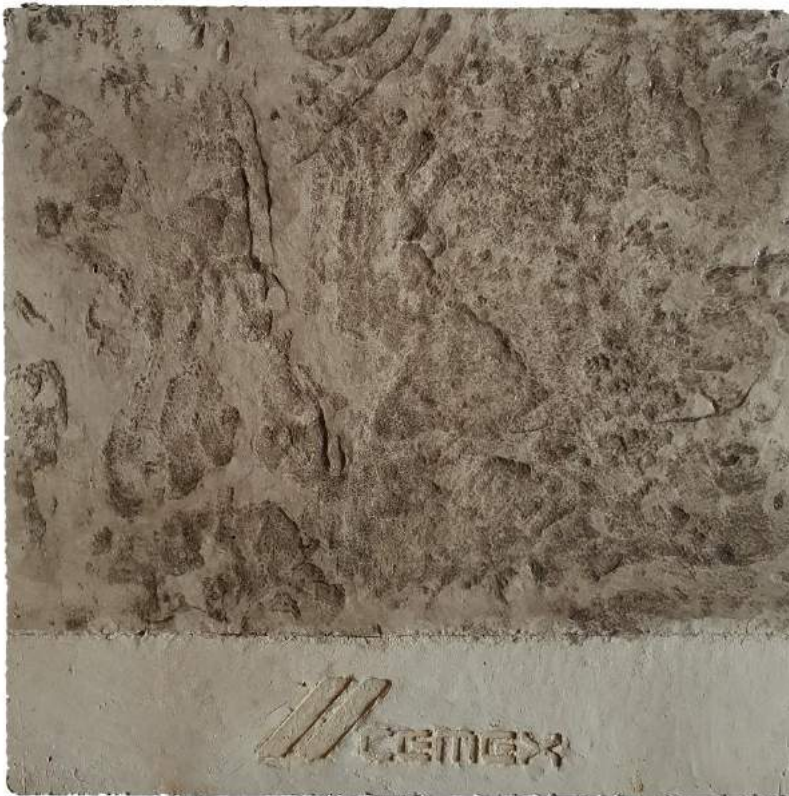
The perfect balance between functionality and aesthetics, providing High Slip resistance

Customize your decorative pavement

Choose texture (BF01 - BF17)

Size of the sample 300 mm * 300 mm

PLEASE NOTE: The print process does not allow for exact reproduction of the colors and therefore should not be taken as a definitive color match



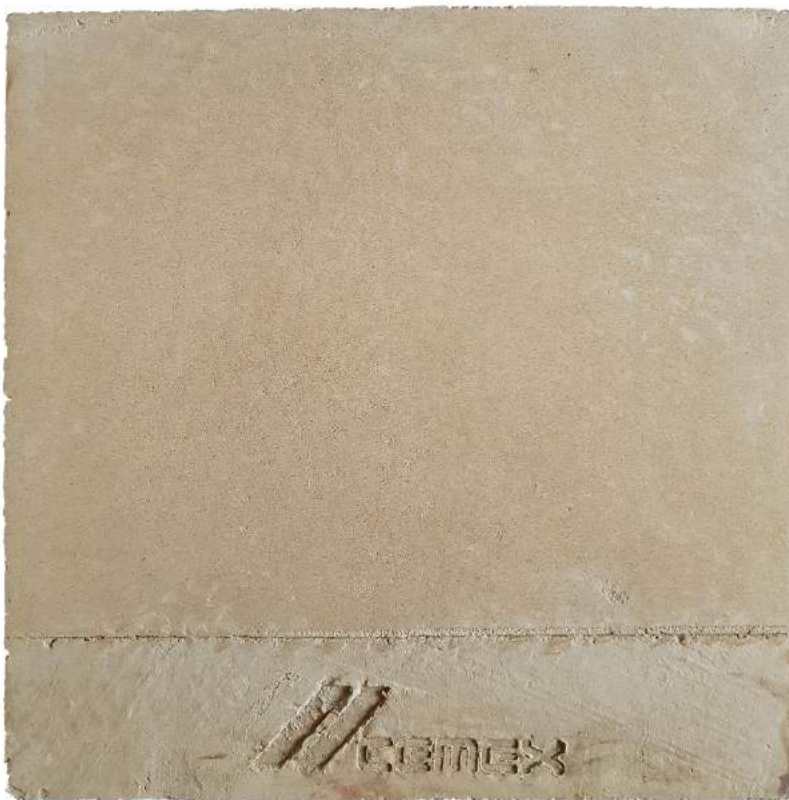
BF – 01
Stamped “heavy stone”

Customize your decorative pavement

Choose texture (BF01 - BF17)

Size of the sample 300 mm * 300 mm

PLEASE NOTE: The print process does not allow for exact reproduction of the colors and therefore should not be taken as a definitive color match



BF – 02
Polished A1

Customize your decorative pavement

Choose texture (BF01 - BF17)

Size of the sample 300 mm * 300 mm

PLEASE NOTE: The print process does not allow for exact reproduction of the colors and therefore should not be taken as a definitive color match



BF – 03
Polished A3

Customize your decorative pavement

Choose texture (BF01 - BF17)

Size of the sample 300 mm * 300 mm

PLEASE NOTE: The print process does not allow for exact reproduction of the colors and therefore should not be taken as a definitive color match



BF – 04
Polished B1

Customize your decorative pavement

Choose texture (BF01 - BF17)

Size of the sample 300 mm * 300 mm

PLEASE NOTE: The print process does not allow for exact reproduction of the colors and therefore should not be taken as a definitive color match



BF – 05
Polished B3

Customize your decorative pavement

Choose texture (BF01 - BF17)

Size of the sample 300 mm * 300 mm

PLEASE NOTE: The print process does not allow for exact reproduction of the colors and therefore should not be taken as a definitive color match



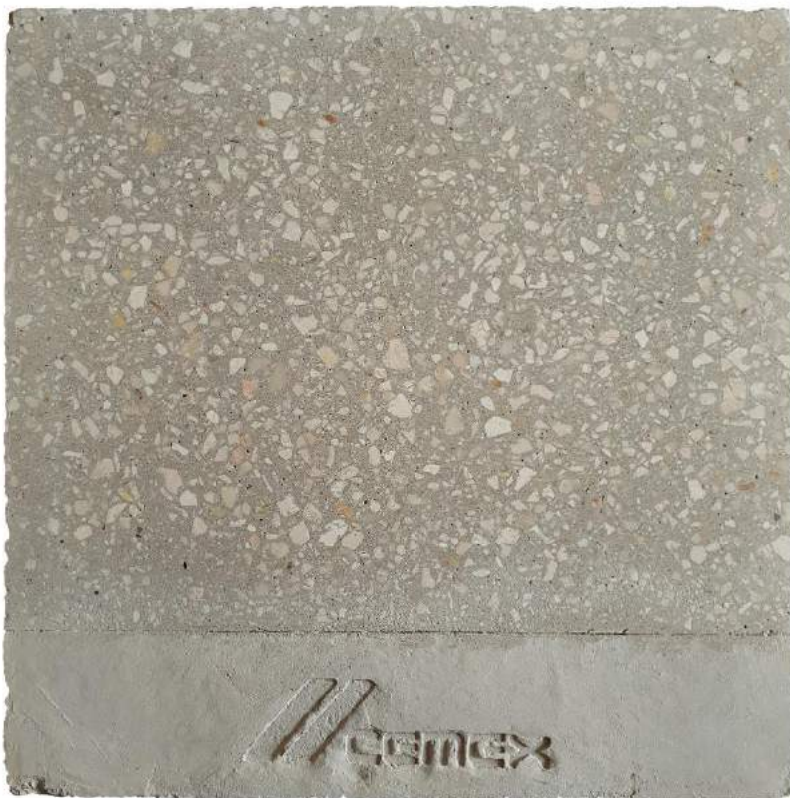
BF – 06
Polished C1

Customize your decorative pavement

Choose texture (BF01 - BF17)

Size of the sample 300 mm * 300 mm

PLEASE NOTE: The print process does not allow for exact reproduction of the colors and therefore should not be taken as a definitive color match



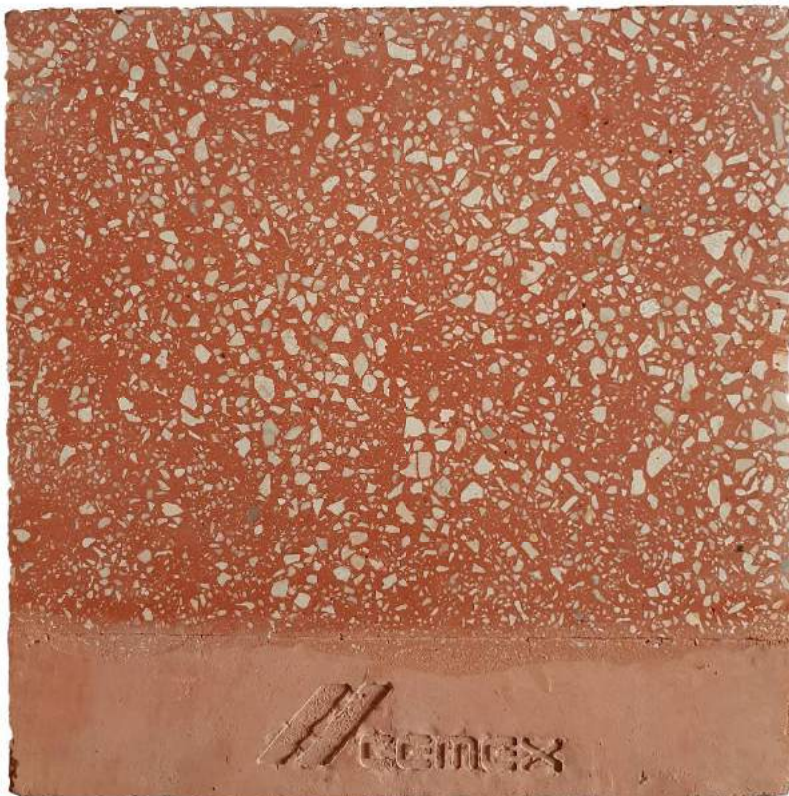
BF – 07
Polished C3

Customize your decorative pavement

Choose texture (BF01 - BF17)

Size of the sample 300 mm * 300 mm

PLEASE NOTE: The print process does not allow for exact reproduction of the colors and therefore should not be taken as a definitive color match



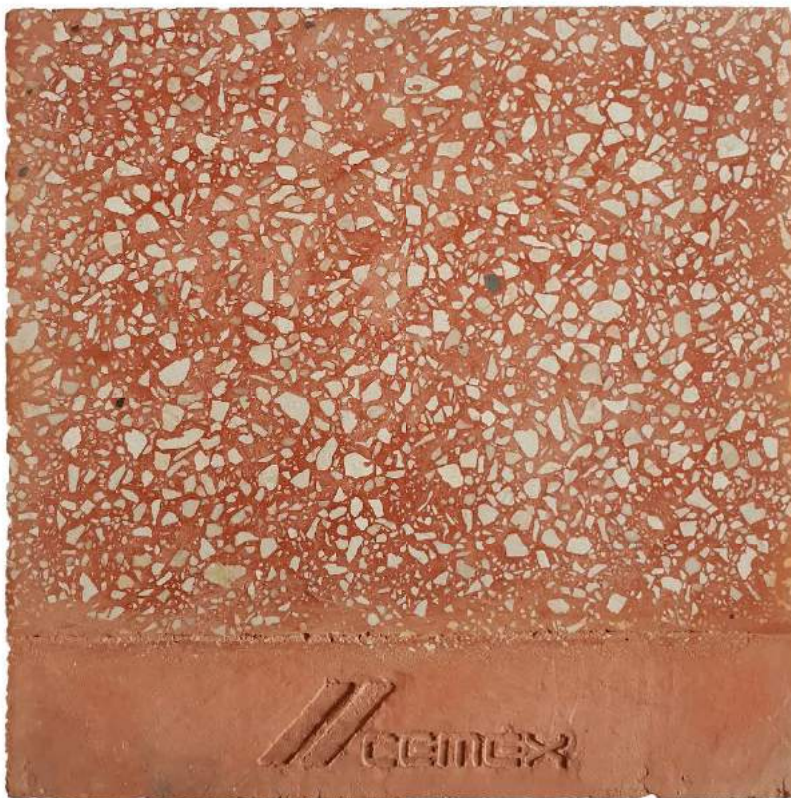
BF – 08
Polished D1

Customize your decorative pavement

Choose texture (BF01 - BF17)

Size of the sample 300 mm * 300 mm

PLEASE NOTE: The print process does not allow for exact reproduction of the colors and therefore should not be taken as a definitive color match



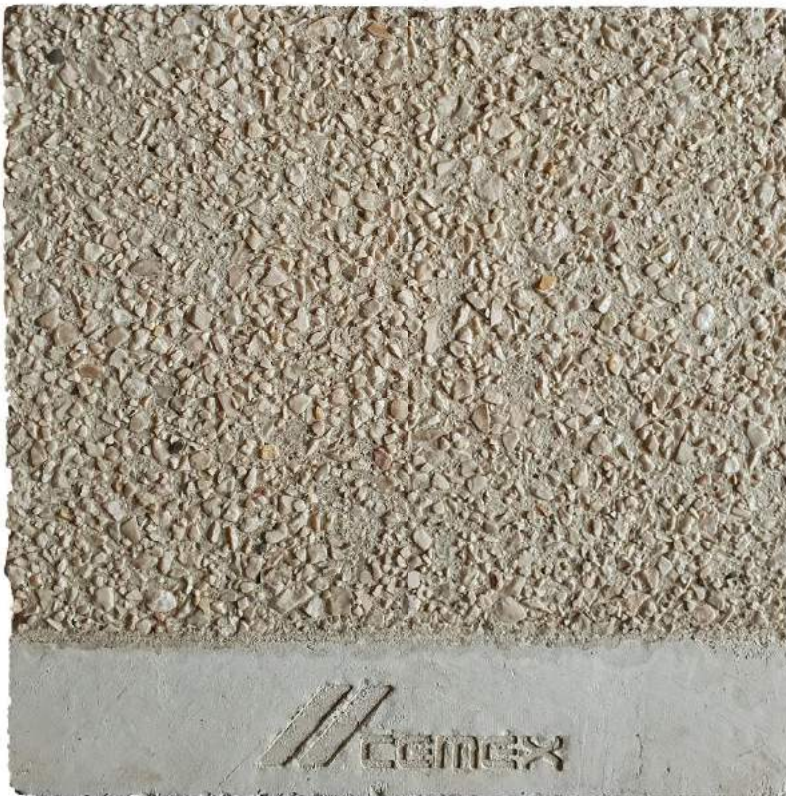
BF – 09
Polished D3

Customize your decorative pavement

Choose texture (BF01 - BF17)

Size of the sample 300 mm * 300 mm

PLEASE NOTE: The print process does not allow for exact reproduction of the colors and therefore should not be taken as a definitive color match



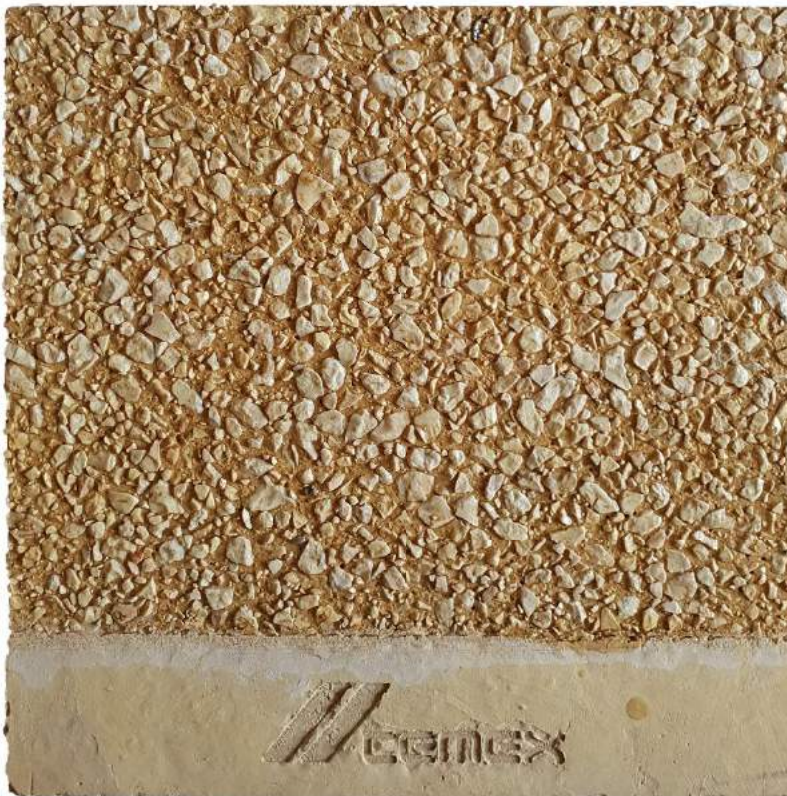
BF – 10
Exposed aggregates “soft”

Customize your decorative pavement

Choose texture (BF01 - BF17)

Size of the sample 300 mm * 300 mm

PLEASE NOTE: The print process does not allow for exact reproduction of the colors and therefore should not be taken as a definitive color match



BF – 11
Exposed aggregates “deep”

Customize your decorative pavement

Choose texture (BF01 - BF17)

Size of the sample 300 mm * 300 mm

PLEASE NOTE: The print process does not allow for exact reproduction of the colors and therefore should not be taken as a definitive color match



BF – 12
Broom finished “soft”

Customize your decorative pavement

Choose texture (BF01 - BF17)

Size of the sample 300 mm * 300 mm

PLEASE NOTE: The print process does not allow for exact reproduction of the colors and therefore should not be taken as a definitive color match



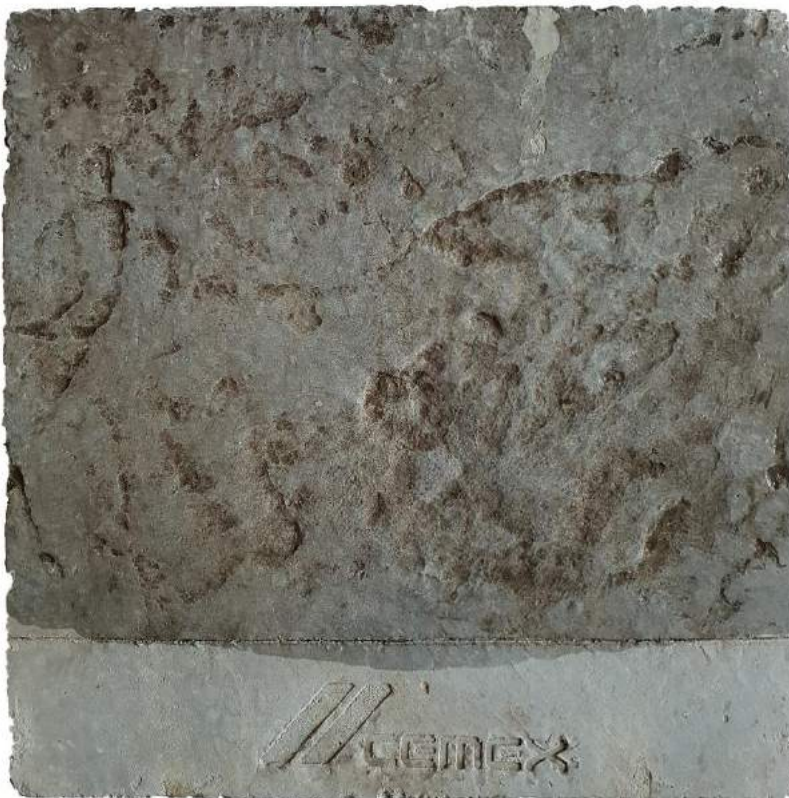
BF – 13
Broom finished “soft”

Customize your decorative pavement

Choose texture (BF01 - BF17)

Size of the sample 300 mm * 300 mm

PLEASE NOTE: The print process does not allow for exact reproduction of the colors and therefore should not be taken as a definitive color match



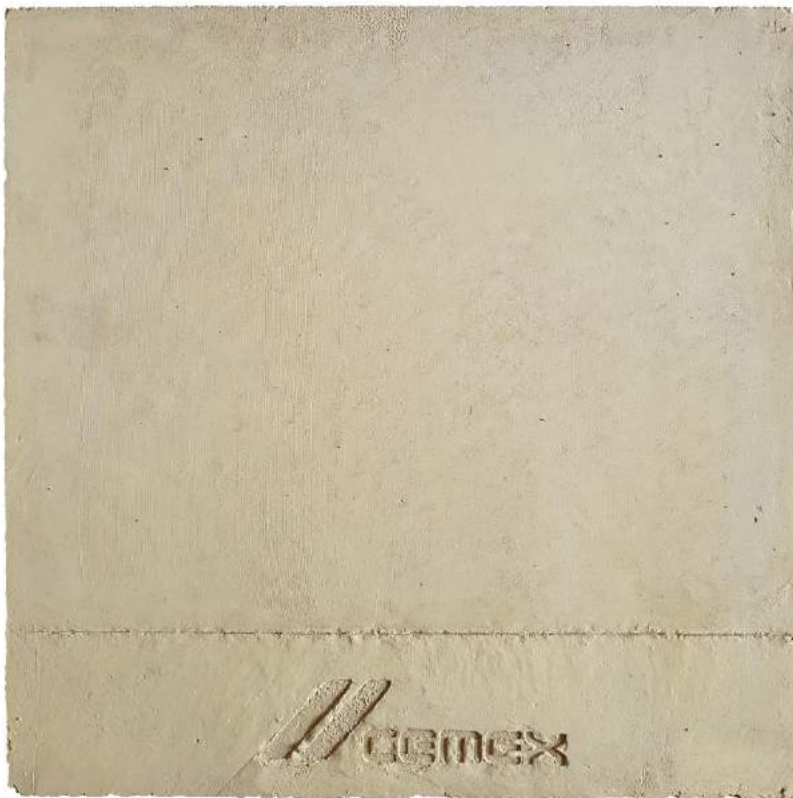
BF – 14
Stamped “chiseled slate”

Customize your decorative pavement

Choose texture (BF01 - BF17)

Size of the sample 300 mm * 300 mm

PLEASE NOTE: The print process does not allow for exact reproduction of the colors and therefore should not be taken as a definitive color match



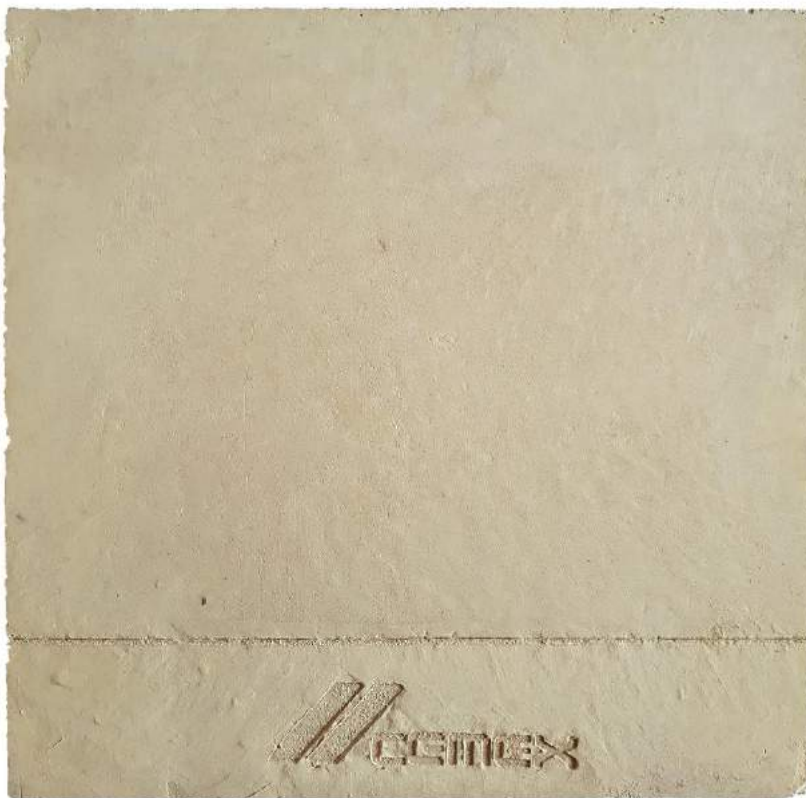
BF – 15
Polished A1

Customize your decorative pavement

Choose texture (BF01 - BF17)

Size of the sample 300 mm * 300 mm

PLEASE NOTE: The print process does not allow for exact reproduction of the colors and therefore should not be taken as a definitive color match



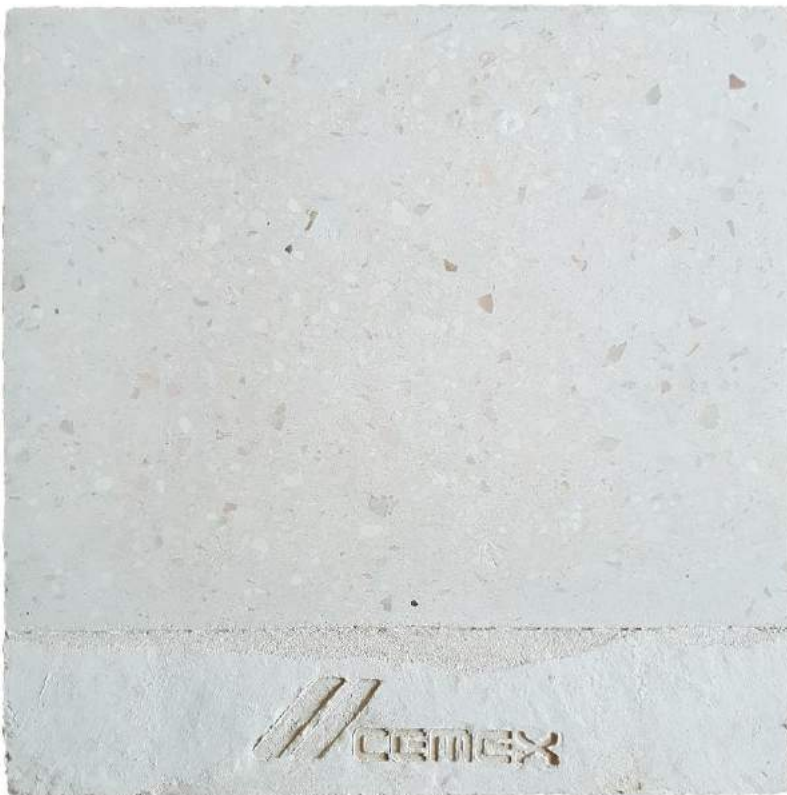
BF – 16
Polished A3

Customize your decorative pavement

Choose texture (BF01 - BF17)

Size of the sample 300 mm * 300 mm

PLEASE NOTE: The print process does not allow for exact reproduction of the colors and therefore should not be taken as a definitive color match



BF – 17
Polished D3

Visit our Showroom

CEMEX Topmix LLC
Al Quoz Industrial Area 3
Dubai, UAE
Tel : 971.4.347.0427
Fax: 971.4.347.1713



Contact us

CEMEX Topmix LLC

Al Quoz Industrial Area 3

Dubai, UAE

Tel : 971.4.347.0427

Fax: 971.4.347.1713

Email info.dubai@cemex.com

CEMEX Falcon LLC

Jebel Ali Industrial Area 3

Dubai, UAE

Tel : 971.4.880.1212

Fax: 971.4.880.1033

Email info.dubai@cemex.com

CEMEX Supermix LLC

Mussafah Industrial Area

Abu Dhabi, UAE

Tel: +971 2 551 5501

Fax: +971 2 551 5560

Email info.abudhabi@cemex.com

UAE website www.cemex.ae

Toll Free Number **800CEMEX**

Cash Customer Hotline **800CEMEX 4U**

Contact us today :

“ Get a quotation (Ready Mix Sales)

<http://www.cemex.ae/contactus.aspx>

“ Get a sample. (Concrete Paving Sales)

<http://www.cemex.ae/contactus.aspx>

